

# State of Wyoming Corner Record

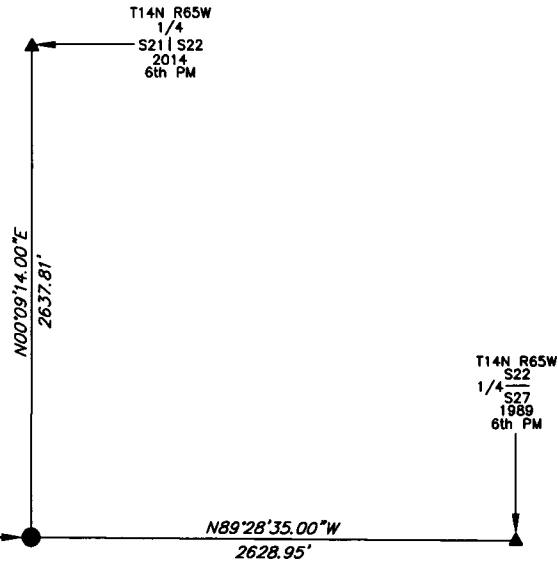
## CORNER PERPETUATION AND FILING ACT,

Regulations of the Board of Registration for Professional Engineers and Land Surveyors.)

Reverse side of this form may be used if more space is needed.

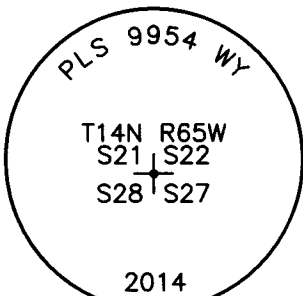
Record of original survey and citation of source of historic information (if corner is lost or obliterated). Description of corner monumentation evidence found and/or monument and accessories established to perpetuate the location of this corner. Sketch of relative location of monument, accessories, and reference points with course and distance to adjacent corner(s) (if determined in this survey). Method and rationale for reestablishment of lost or obliterated corner.

**NOTE:**  
LINES SHOWN ARE BETWEEN MONUMENTS AND MAY OR MAY NOT BE SECTION OR SECTION SUBDIVISION LINES.



**CORNER WAS OBLITERATED BY DRIVEWAY CONSTRUCTION AT THE LOCATION FOR THIS CORNER COMMON TO 4 SECTIONS. RESET MONUMENT WHICH IS A 2.5" ALUMINUM CAP ON A 3/4" BY 30" REBAR FLUSH WITH THE ASPHALT DRIVE. CORNER REESTABLISHED BY REPLICATING SURVEY OF FRONTIER TRACTS, 2ND FILING SUBDIVISION PLAT.**

THE MONUMENT IS FOR: T14N R65W S21 S22 S28 S27 2014 6th PM



THE MONUMENT IS MARKED

**CORNER MONUMENT SYMBOLS**

- RECORD IS FOR THIS CORNER MONUMENT.
- ▲ A RELATED CORNER OR WC MONUMENT.

↑  
N

SCALE 1"=1000'  
(EXCEPT IN TRIVIAL CASES)  
BEARINGS ARE RELATED TO WGS 84 WITH GPS OBSERVATIONS  
DRAWN BY: SM  
P.C. B. LOWREY  
COUNTY: LARAMIE

Date of Field Work: 09/09/2014 Office Reference: \_\_\_\_\_

**CROSS INDEX DIAGRAM**

Firm/Agency, Address

UELS, LLC

85 South 200 East

Vernal, Utah 84078

Telephone Number: 435-789-1017

This corner record was prepared by me or under my direction and supervision.

SEAL & SIGNATURE

	1	2	3	4	5	6	7	8	9	10	11	12	13	14	15	16	17	18	19	20	21	22	23	24	25
A																									
B																									
C			6		5		4		3		2														
D																									
E																									
F																									
G			7		8		9		10		11		12												
H																									
J																									
K																									
L			18		17		16		15		14		13												
M																									
N																									
O																									
P			19		20		21		22		23		24												
Q																									
R																									
S																									
T			30		29		28		27		26		25												
U																									
V																									
W																									
X			31		32		33		34		35		36												
Y																									
Z																									



CORNER COMMON TO 4 SECTIONS  
Corner Name: SOUTHWEST CORNER OF SECTION 22 Section: 22 T 14N R 65W ; 6TH P.M. Cross Index No.: R-13  
SBRPEPLS/PLSW: March 1994 (CLCR...SJA)



RECP #: 670050  
RECORDED 9/22/2015 AT 10:36 AM BK# 2465 PG# 58  
Debra K. Lathrop, CLERK OF LARAMIE COUNTY, WY PAGE 1 OF 1